

Bull Run Mountains Conservancy, Inc.

Education • Research • Stewardship

Bull Run Mountains State Natural Area Preserve

P.O. Box 210 • Broad Run Virginia 20137 • (703) 753-2631 • www.brmconservancy.org

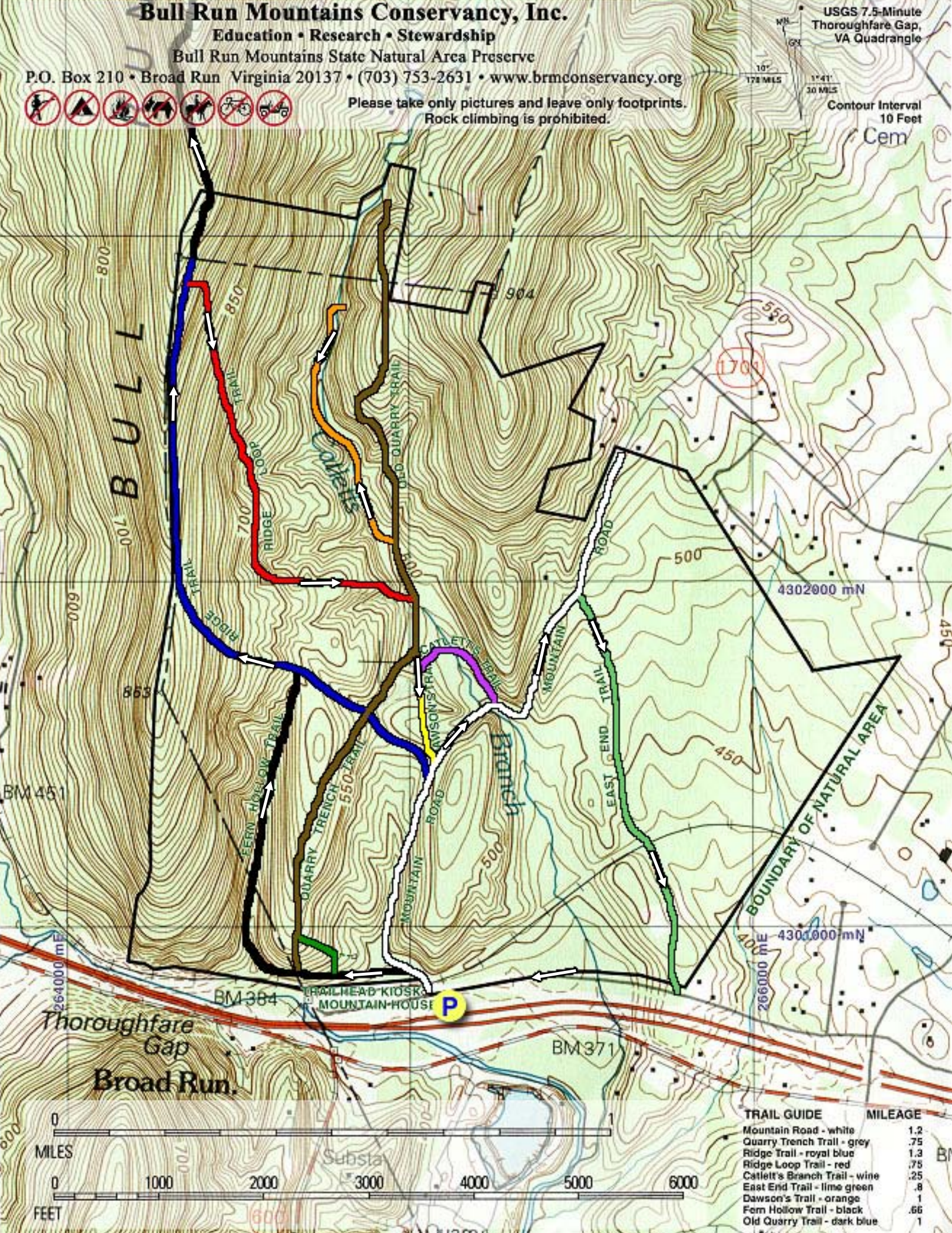


Please take only pictures and leave only footprints.
Rock climbing is prohibited.

USGS 7.5-Minute
Thoroughfare Gap,
VA Quadrangle

10° 17' 18" N
77° 41' 30" W





Contour Interval
10 Feet
Cem



TRAIL GUIDE	MILEAGE
Mountain Road - white	1.2
Quarry Trench Trail - grey	.75
Ridge Trail - royal blue	1.3
Ridge Loop Trail - red	.75
Cattell's Branch Trail - wine	.25
East End Trail - lime green	.8
Dawson's Trail - orange	1
Fern Hollow Trail - black	.66
Old Quarry Trail - dark blue	1



Bull Run Conservancy - Haymarket, Virginia

Length	Difficulty	Streams	Views	Solitude	Camping
7.2 mls					N/A
Hiking Time: Elev. Gain: Notes:	4 hours with a half hour for lunch 1,080 ft All trail color references are per the post markers. The tree trail blazes are to be ignored in regard to these directions. Dogs are NOT allowed on the hiking trails.				
Directions from DC: Take I66 west to Haymarket exit 40 US15, South 1/4 mile on US15, Right on Rt 55 for, 2.5 miles, Right on Turner road passing over I66, Immediately after passing over I66 left on Beverly Mill Rd for 3/4 where Mountain House and public parking is at the end of the road on the left.					

Start by passing through a pedestrian gate at the end of the parking area and immediately crossing the railroad tracks. Turn left and follow the black marked Fern Hollow Trail for a short distance before coming to the first trail junction marked with a white disk.

Stay left crossing a small wooden footpath before coming to your next trail that enters from the right. This green marked side trail leads to the Chapman Graveyard in 100ft. Continuing straight on the trail you will immediately pass the ruins of the Chapman House and Ice Storage Pit. Continue straight for another hundred yards and arrive at Beverley Mill. Note: The mill is not part of the BRMC area.

Continue straight, past the brown marked Quarry Trail, and descend to the ruins of the second mill in another 400ft. At this point turn right uphill continuing on the black marked Fern Hollow Trail as it ascends for 0.6 miles where it ends at the junction of the blue Ridge Trail.

Turn left as the blue trail ascends, then heads right, following Bull Run Ridge. In 1.0 miles arrive at the intersection of the red Ridge Loop Trail, that descends to the right. Stay straight on the blue marked trail and shortly leaving the BRMC property.

The trail will initially descend the left side of the ridge, then ascend towards the ridge line. As you approach the high point, pass several side paths that lead to obstructed vistas on the left. Pass around a tree that has blocked the trail, and continue uphill for another 100 yards where the trail becomes less obvious. At this point look for a red diamond on a tree marking the path to the Elvis Rock Overlook. There is a second red diamond marking the pass in the trees to the overlook itself.

Backtrack to the last intersection and turn left downhill for 0.8 miles on the red marked Ridge Loop Trail, as it descends to the valley floor and intersection of the blue marked Old Quarry Trail and small creek.

Turn left on the brown blazed trail crossing the creek and in 0.1 miles there is a small trash dump on your right side. Continue straight following the orange trail and creek for another 0.1 miles at which point several blow downs cross the trail and it then appears to disappear. Cross the creek and the trail will now follow the creek on the left hand side for another 0.1 miles before arriving at the old quarry. Cross the creek again and enjoy the great stone benches. To continue retrace your steps back down the creek past the trash dump, to the last intersection.

Now continue straight on the brown marked trail for 0.1 miles where the trail branches, veer left and in a short distance the trail branches again with the purple marked Catlett Trail turning left and the yellow Dawson's Trail continuing straight. Stay straight on the Dawson's Trail and in 0.1 miles arrive at the junction of the white marked Mountain Road Trail.

Turn left on the white trail crossing the creek in 100 yards and ascend a long straight section before passing a side trail that leads to an old homestead on your left. Continue straight and in 100 ft arrive at the intersection of the green marked East End Trail.

Turn right downhill following the green marked trail for 0.6 miles where you will cross the railroad tracks. In another 0.3 miles, and just past a small stand of pine trees emerge on Beverly Mill Road. Turn right following the road for 0.4 miles back to the Mountain House and parking area.